



PORSCHE



**Exclusive 911**  
Ultimate personalisation



# Contents

<b>Philosophy</b>	<b>6</b>
<b>Exclusive examples</b>	<b>8</b>
<b>Colours and materials</b>	<b>28</b>
<b>Exclusive options</b>	<b>30</b>
<b>Exclusive expertise</b>	<b>52</b>
<b>Designing your Porsche</b>	<b>56</b>
<b>Service</b>	<b>57</b>



911 Carrera 4S with Aerokit Cup, side skirts painted, Carrera S Powerkit, wheels painted black



# Philosophy

**Our cars are state of the art.**

**And made to measure.**

Exclusivity. Individuality. Craftsmanship. Concepts which have always been associated with Porsche.

Porsche Exclusive stands for the individual personalisation of your vehicle, direct from the factory. The possibilities are as great as your imagination. You tell us what you want and we will do our utmost to give it to you – provided, of course, that it is technically feasible and does not compromise quality.

When customising a car, it is not enough just to use the best available materials. Our overriding principle has always been to make full use of the traditional skills of our craftsmen, carrying out the work by hand. Our specialists have years of experience in the hand crafting of decorative hardwoods, enabling us to bring out the individual character of this superb material.

What about carbon? Light and extremely durable. Expressing all the excitement of the racetrack. Or stainless steel? Very strong, polished and with a chrome finish – pleasing to the eye and extremely resistant to heat and corrosion. Or another truly brilliant possibility: highly-polished anodised aluminium.

Would you like to personalise the interior or exterior of your car, fit an Aerokit or painted wheels? Your wish is our command.



Material composition: leather, carbon, Alcantara and aluminium

## Exclusive examples

**Vehicle: Porsche.**

**Details: Porsche Exclusive.**

A Porsche is more than just a car. It is also an expression of the personal freedom of its driver, and of their very own taste and lifestyle.

Porsche Exclusive offers you a wide range of individual extras so you can personalise your car to your own unique requirements. Straight from the factory. Visual and technical enhancements, for the interior and exterior. And always just as you want them.

The most important extra, though, is time. For it is only by taking the utmost care during the consultancy, planning and processing phases that it is possible to create something really special. Something which is exactly tailor-made to your requirements – down to the finest detail. Something unique. With its own unique character. A Porsche which is as special as its driver.

The following pages will show you five examples of Exclusive personalisations which are sure to inspire you. The captions describe a selection of the Exclusive range shown.

Find out more about how to design your own special Porsche on page 56.



911 Carrera 4S with Aerokit Cup, wheels painted black, side skirts painted, headlight cleaning system covers painted





Aerokit Turbo

# 911 Turbo

Meteor Grey Metallic

**Laid back but raring to go.  
And its personalisation is no different.**

The exterior is shaped by the Aerokit Turbo, the Chestnut Brown leather interior is complemented by a selection of leather features in Cocoa. A contradiction? You may have thought so. Here, however, high-octane excitement and

peaceful harmony are the perfect match.

Find out more about the equipment details of the 911 Turbo in Meteor Grey Metallic in the current 911 Turbo price list.



PCM package in leather



Air vents from the extended trim package in leather



Aerokit Turbo

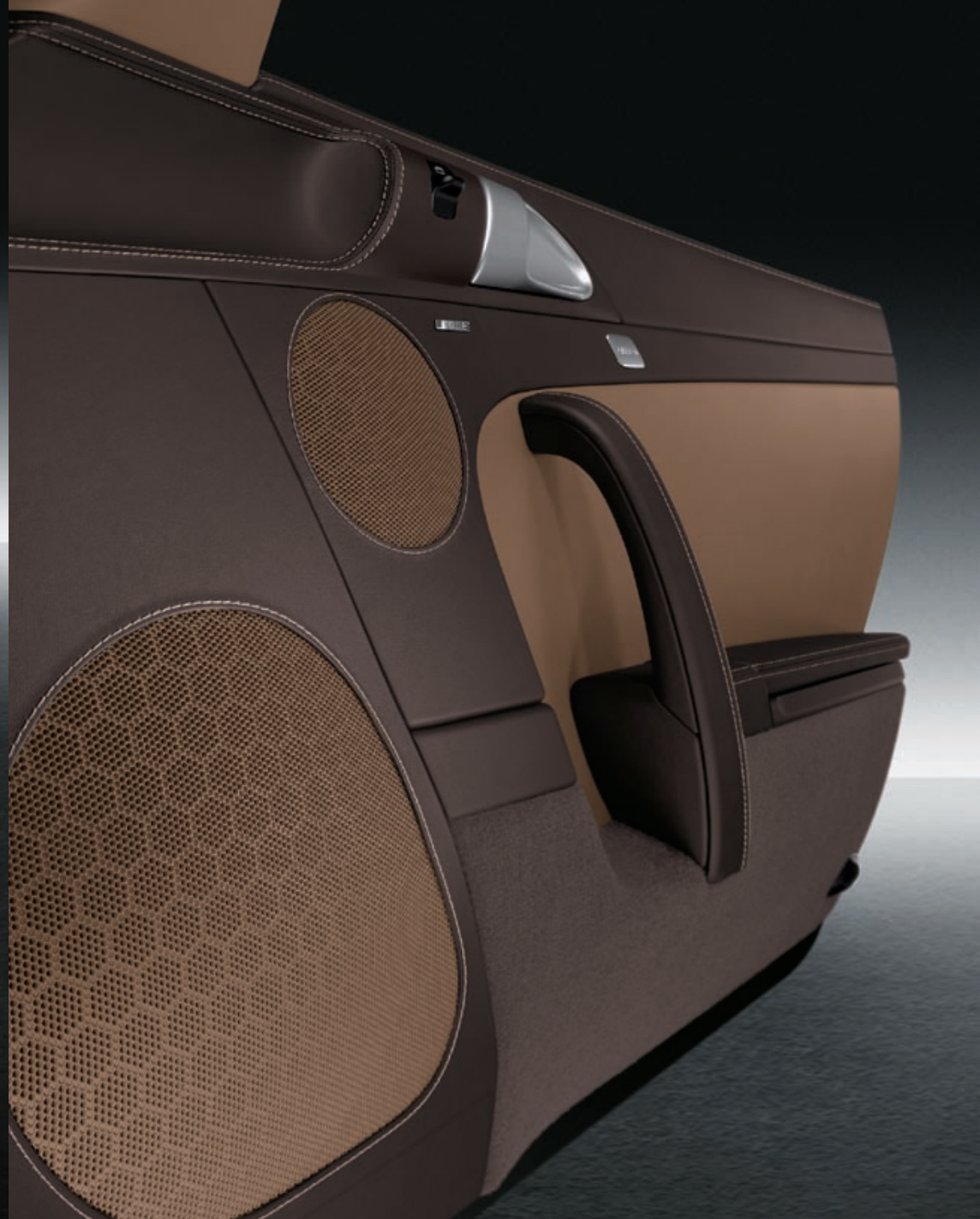


Air vents from the extended trim package in leather, dashboard trim strip in leather, steering column casing in leather, PCM package in leather, PDK gear selector and handbrake lever personalisation package, rear centre console in leather, seat belt buckles in leather, roof lining in leather, sun visors in two-tone leather, interior light trim in leather, interior mirror in leather





Aerokit Turbo



Extended trim package door trims in leather, loudspeaker finishers on doors and at rear in leather





Aerokit Turbo, air intake grilles in matt Aluminium Look, exterior mirror lower trims in matt Aluminium Look, mirror attachment point finishers painted, headlight cleaning system covers painted



Aerokit Turbo, air intake grilles in matt Aluminium Look, exterior mirror lower trims in matt Aluminium Look

# 911 Turbo S

Polar Silver Metallic

**Epitomises peace and precision.  
Even in the finish.**

What more can you want than a 911 Turbo S? You could have an Aerokit Turbo for even more performance. Taillights with clear glass look for even more style. The PDK selector and handbrake

lever in aluminium for an even more sporty feel.

Find out more about the equipment details in the current 911 Turbo and 911 Turbo S price list.



Exterior mirror lower trims in matt Aluminium Look



Air intake grilles in matt Aluminium Look



Extended trim package in leather, PCM package in leather, PDK gear selector and handbrake lever in aluminium, PDK gear selector gate surround in leather, rear centre console in leather, loudspeaker finishers on doors and at rear in leather





Aerokit Turbo, taillights with clear glass look



Inner door sill guards in leather, personalised door entry guards in stainless steel, illuminated



SportDesign front apron, decorative side logo with model designation, side skirts painted

# 911 Targa 4S

Meteor Grey Metallic

**Extraordinary design.  
And it's yours.**

The exterior featuring the SportDesign front apron and sports tailpipes. The interior upholstered in Ocean Blue leather with PCM package in Aluminium Look. All in all, another bold

expression of its, and its driver's, inner strength.

Find out more about the equipment details of the 911 Targa 4S in Meteor Grey Metallic in the current 911 price list.



PCM package in Aluminium Look, PDK gear selector and handbrake lever in aluminium



Extended trim package in Aluminium Look, multifunction steering wheel in Aluminium Look, PCM package in Aluminium Look, PDK gear selector and handbrake lever in aluminium





Air vent slats painted, PCM package painted, gear lever/selector trim painted, rear centre console painted, door release levers painted, steering column trim in leather, handbrake lever in Aluminium II, PDK gear selector gate surround in leather, seat belt buckles in leather

# 911 Carrera 4S Cabriolet

Cream White

**A big moment. The marriage of body and engine. In traditional white, of course.**

A shining example: the 911 Carrera 4S Cabriolet in Cream White with Cocoa leather and partially painted interior. Everything in harmony, nothing short of your expectations. The ultimate in precision.

Find out more about the equipment details of the 911 Carrera 4S Cabriolet in Cream White in the current 911 price list.



Headlight cleaning system covers painted, exterior package painted, wheels painted, side skirts painted, mirror attachment point finishers painted



B-pillar seat belt outlet trim painted



19-inch Carrera Sport wheels, side skirts painted, side skid plates (rear) painted, sports tailpipes

# 911 Carrera 4S Cabriolet

British Racing Green

**28,000 race wins.**  
**That clearly reflects on you too.**

The 911 and British Racing Green. Both symbolise motorsport – as if made for each other. Just like the hood in Cocoa and the interior in Cognac leather with decorative stitching in GT Silver Metallic and

finishing touches in aluminium and Aluminium Look.

Find out more about the equipment details of the 911 Carrera 4S British Racing Green in the current 911 price list.



Door release levers in leather



Door release levers in leather, gear lever/selector trim in leather, steering wheel rim with contrasting decorative stitching, air vent slats in Aluminium Look



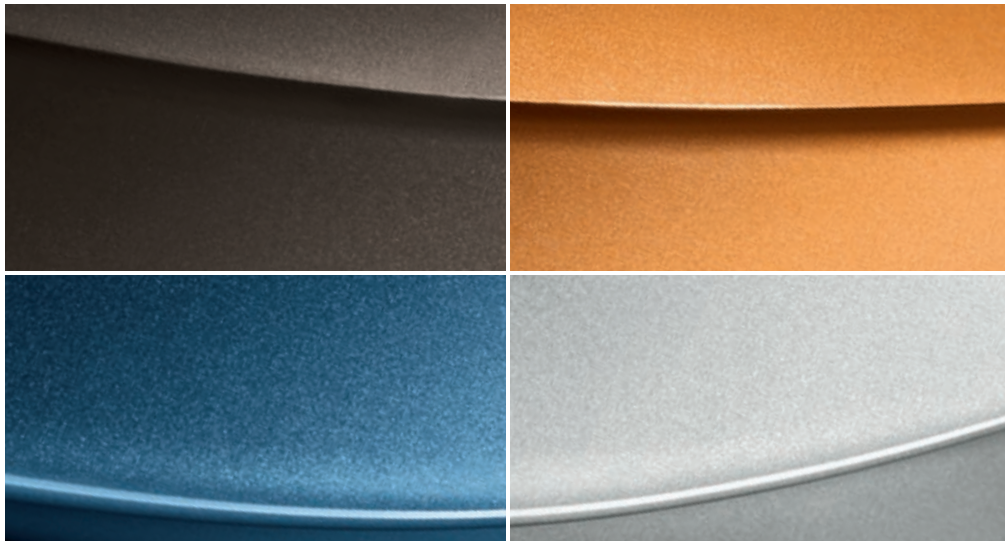
# Colours and materials

**Exceptional, extravagant, exquisite, excellent, exact.**

**In a word: Exclusive.**

We can offer an exclusive range of colours and materials for you to choose from when designing your new Porsche – both inside and outside. Individual colours for the interior and exterior and also high-quality materials such as leather, Alcantara, fine macassar wood<sup>1)</sup>,

carbon, aluminium and stainless steel to enhance the interior. You can find out what is possible at your Porsche Centre. Or contact the Porsche Exclusive Customer Centre in Zuffenhausen directly for an individual consultation (see page 56).



Selection of individual colours: Marrone Metallic, Nordic Gold Metallic, Azurro California Metallic, Polar Silver Metallic

<sup>1)</sup> Since wood is a natural product, there may be variations in colour and grain.

## Leather

Leather is a traditional natural material – a true classic. Items made of leather are both timeless and hardwearing.



## Alcantara

This high-quality material is easy to care for, washable and has excellent non-slip properties.



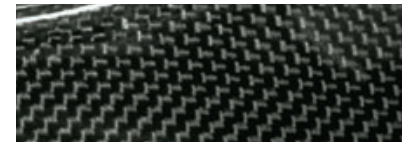
## Macassar wood<sup>1)</sup>

Macassar ebony is dark and distinctive with a modern, elegant look. The deep black heartwood has reddish-brown lines and a dramatic, marble-like texture.



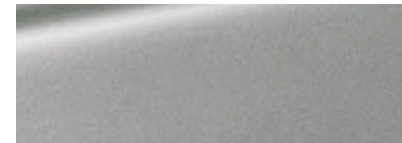
## Carbon

Carbon fibre is a light yet highly robust material used extensively in motorsport. Its distinctive look perfectly complements the car's race-bred engineering.



## Aluminium

Use this stylish metal or our special Aluminium Look finish to create striking interior highlights that evoke the purity of race car design.



## Stainless steel

Stainless steel is an especially pure material, and it looks absolutely first class.





SportDesign front apron



Air intake grilles in matt Aluminium Look



Taillights with clear glass look

## Exclusive options

### Exterior.

Option	911 Carrera	911 Carrera S	911 Carrera GTS	911 Carrera 4	911 Carrera 4S	911 Carrera Cabriolet	911 Carrera S Cabriolet	911 Carrera GTS Cabriolet	911 Carrera 4 Cabriolet	911 Carrera 4S Cabriolet	911 Targa 4	911 Targa 4S	911 Turbo	911 Turbo S	911 Turbo Cabriolet	911 Turbo S Cabriolet	911 GT3 RS 4.0	I no.	Page
• Aerokit Cup	○	○	○	○	○	○	○	○	○	○	○	○	○	○	○	○	○	XAA	5, 9
• Aerokit Turbo	—	—	—	—	—	—	—	—	—	—	—	—	—	—	—	—	—	XAF	10, 11, 14
• SportDesign front apron	○	○	—	○	○	○	○	○	○	○	○	○	○	○	○	○	○	XAS	22, 30
• Side skirts painted <sup>1)</sup>	—	—	○	○	○	○	○	○	○	○	○	○	○	○	○	○	○	XAJ	5, 22, 25
• Exterior mirror lower trims in matt Aluminium Look	○	○	○	○	○	○	○	○	○	○	○	○	○	○	○	○	○	XUZ	16, 17
• Mirror attachment point finishers painted <sup>2)</sup>	○	○	○	○	○	○	○	○	○	○	○	○	○	○	○	○	○	CMA	16, 25
• Exterior package painted <sup>2), 3)</sup>	○	○	—	○	○	○	○	○	○	○	○	○	○	○	○	○	○		25
• Spoiler lip painted <sup>1)</sup>	—	—	○	—	—	—	—	—	—	—	—	—	○	○	○	○	—	XUA	Back title
• Side skid plates (front) painted <sup>2)</sup>	○	○	—	○	○	○	○	○	○	○	○	○	—	—	—	—	—	CAA	25
• Side skid plates (rear) painted <sup>2)</sup>	—	—	○	○	○	○	○	○	○	○	○	○	—	—	—	—	—	CAB	26

— not available ○ I number/extra-cost option • standard equipment W no-cost option  
More detailed information on individual equipment and equipment packages can be found in the current vehicle price list.

### Exterior.

Option	911 Carrera	911 Carrera S	911 Carrera GTS	911 Carrera 4	911 Carrera 4S	911 Carrera Cabriolet	911 Carrera S Cabriolet	911 Carrera GTS Cabriolet	911 Carrera 4 Cabriolet	911 Carrera 4S Cabriolet	911 Targa 4	911 Targa 4S	911 Turbo	911 Turbo S	911 Turbo Cabriolet	911 Turbo S Cabriolet	911 GT3 RS 4.0	I no.	Page
• Rear undertray painted <sup>1)</sup>	—	—	—	—	—	—	—	—	—	—	—	—	—	○	○	○	—	XUE	Title
• Air intake grilles painted <sup>2)</sup>	○	○	○	○	○	○	○	○	○	○	○	○	○	○	○	○	○	CNF	25
• Air intake grilles in matt Aluminium Look	○	○	○	○	○	○	○	○	○	○	○	○	○	○	○	○	○	CNC	16, 31
• Headlight cleaning system covers painted <sup>2)</sup>	○	○	○	○	○	○	○	○	○	○	○	○	○	○	○	○	○	XUB	9, 17, 25
• Taillights with clear glass look	○	○	○	○	○	○	○	○	○	○	○	○	○	○	○	○	○	XXG	20, 31
• Decorative side logo with model designation	○	○	—	○	○	○	○	—	○	○	○	○	○	○	○	○	○	CMX	22
• Side skirts painted <sup>2)</sup>	○	○	○	○	○	○	○	○	○	○	○	○	○	○	○	○	○	XUC	Title
• Fuel filler cap with Aluminium Look finish	○	○	○	○	○	○	○	○	○	○	○	○	○	○	○	○	○	• XYB	—

<sup>1)</sup> Paint in exterior colour.

<sup>2)</sup> Paint in exterior colour, unless otherwise specified at time of ordering.

For more information on painting in a contrasting exterior colour, please consult your Porsche Centre.

<sup>3)</sup> Please refer to the current price list for your specific vehicle for details and part numbers.





Sports tailpipes



Carrera S Powerkit



Wheels painted in different exterior colour (black)

## Engine, transmission, chassis and wheels.

Option	911 Carrera	911 Carrera S	911 Carrera GTS	911 Carrera 4	911 Carrera 4S	911 Carrera Cabriolet	911 Carrera S Cabriolet	911 Carrera GTS Cabriolet	911 Carrera 4 Cabriolet	911 Carrera 4S Cabriolet	911 Targa 4	911 Targa 4S	911 Turbo	911 Turbo S	911 Turbo Cabriolet	911 Turbo S Cabriolet	911 GT3 RS 4.0	I no.	Page
• Carrera S Powerkit engine upgrade to 300 kW (408 hp) with sports exhaust system (I no. 176) and specially designed twin tailpipes	–	○	–	–	–	–	–	–	–	–	–	–	–	–	–	–	–	X51	5, 33
• Sports tailpipes	○	○	–	○	○	○	–	○	○	○	○	–	–	–	–	–	–	XLT	26, 32
• Short shifter	○	○	○	○	○	○	○	○	○	○	○	○	–	○	–	–	–	XCZ	–
• 19-inch Carrera Sport wheels <sup>1)</sup>	○	○	W	○	○	○	W	○	○	○	○	–	–	–	–	–	–	XRR	26
• Wheel spacers on front and rear axle, 5-mm	○	○	–	○	○	○	–	○	○	○	○	–	–	–	–	–	–	XRP	–

– not available ○ I number/extra-cost option • standard equipment W no-cost option  
More detailed information on individual equipment and equipment packages can be found in the current vehicle price list.

## Wheels.

Option	911 Carrera	911 Carrera S	911 Carrera GTS	911 Carrera 4	911 Carrera 4S	911 Carrera Cabriolet	911 Carrera S Cabriolet	911 Carrera GTS Cabriolet	911 Carrera 4 Cabriolet	911 Carrera 4S Cabriolet	911 Targa 4	911 Targa 4S	911 Turbo	911 Turbo S	911 Turbo Cabriolet	911 Turbo S Cabriolet	911 GT3 RS 4.0	I no.	Page
• Wheels painted in exterior colour	○	○	W	○	○	○	○	W	○	○	○	○	○	○	○	○	○	XD9	25
• Wheels painted in different exterior colour																			
Black	○	○	●	○	○	○	○	●	○	○	○	○	○	○	○	○	○	XDA	5, 9, 33
Basalt Black Metallic	○	○	–	○	○	○	○	–	○	○	○	○	○	○	○	○	○	XDB	–
Speed Yellow	○	○	–	○	○	○	○	–	○	○	○	○	○	○	○	○	○	XDC	–
Carrara White	○	○	–	○	○	○	○	–	○	○	○	○	○	○	○	○	○	XDD	–
Guards Red	○	○	–	○	○	○	○	–	○	○	○	○	○	○	○	○	○	XDE	–
Other standard and special colours	○	○	–	○	○	○	○	–	○	○	○	○	○	○	○	○	○	CRX	–

<sup>1)</sup> Includes wheel centres with full-colour Porsche Crest.



Interior painted, instrument dials in black



Air vent slats painted



Door trim package painted

## Interior.

Option	911 Carrera	911 Carrera S	911 Carrera GTS	911 Carrera 4	911 Carrera 4S	911 Carrera Cabriolet	911 Carrera S Cabriolet	911 Carrera GTS Cabriolet	911 Carrera 4 Cabriolet	911 Carrera 4S Cabriolet	911 Targa 4	911 Targa 4S	911 Turbo	911 Turbo S	911 Turbo Cabriolet	911 Turbo S Cabriolet	911 GT3 RS 4.0	I no.	Page
• Dashboard trim package painted <sup>1)</sup>	○	○	○	○	○	○	○	○	○	○	○	○	○	○	○	○	○	CDG	–
• Door trim package painted <sup>1)</sup>	○	○	○	○	○	○	○	○	○	○	○	○	○	○	○	○	○	CDH	35
• Door release levers painted <sup>1)</sup>	○	○	○	○	○	○	○	○	○	○	○	○	○	○	○	○	○	CMC	24
• Instrument cluster surround painted <sup>1)</sup>	○	○	○	○	○	○	○	○	○	○	○	○	○	○	○	○	○	XDP	–
• Dashboard trim strip painted <sup>1)</sup>	○	○	○	○	○	○	○	○	○	○	○	○	○	○	○	○	○	XDM	–
• Air vent slats painted <sup>1)</sup>	○	○	○	○	○	○	○	○	○	○	○	○	○	○	○	○	○	CDN	35, 44
• PDK gear selector gate surround painted <sup>1)</sup>	○	○	○	○	○	○	○	○	○	○	○	○	○	○	○	○	○	XWS	–

– not available ○ I number/extra-cost option ● standard equipment W no-cost option  
More detailed information on individual equipment and equipment packages can be found in the current vehicle price list.

## Interior.

Option	911 Carrera	911 Carrera S	911 Carrera GTS	911 Carrera 4	911 Carrera 4S	911 Carrera Cabriolet	911 Carrera S Cabriolet	911 Carrera GTS Cabriolet	911 Carrera 4 Cabriolet	911 Carrera 4S Cabriolet	911 Targa 4	911 Targa 4S	911 Turbo	911 Turbo S	911 Turbo Cabriolet	911 Turbo S Cabriolet	911 GT3 RS 4.0	I no.	Page
• Instrument dials in																			
Black	●	W	●	●	W	●	W	●	●	W	●	W	–	–	–	–	–	022	34
Sand Beige	○	○	○	○	○	○	○	○	○	○	○	○	○	○	○	○	○	XFD	–
Guards Red	○	○	○	○	○	○	○	○	○	○	○	○	○	○	○	○	○	XFG	44
Speed Yellow	○	○	○	○	○	○	○	○	○	○	○	○	○	○	○	○	○	XFH	46
Carrara White	○	○	○	○	○	○	○	○	○	○	○	○	○	○	○	○	○	XFJ	–
• Sport Chrono dial painted																			
Sand Beige	○	○	○	○	○	○	○	○	○	○	○	○	○	○	○	○	○	CGD	–
Guards Red	○	○	○	○	○	○	○	○	○	○	○	○	○	○	○	○	○	CGG	44
Speed Yellow	○	○	○	○	○	○	○	○	○	○	○	○	○	○	○	○	○	CGH	46
Carrara White	○	○	○	○	○	○	○	○	○	○	○	○	○	○	○	○	○	CGJ	–

<sup>1)</sup> Paint in exterior colour. This option is also available in black paint, independent of the exterior colour (different order number). Please refer to the current price list for your specific vehicle for details and part numbers.





Sports seat backrests painted, loudspeaker finishers on doors and at rear in leather



Sports bucket seat belt passages painted



Full-colour Porsche logo on wind deflector



Rear footwell lighting

## Interior.

Option	911 Carrera	911 Carrera S	911 Carrera GTS	911 Carrera 4	911 Carrera 4S	911 Carrera Cabriolet	911 Carrera S Cabriolet	911 Carrera GTS Cabriolet	911 Carrera 4 Cabriolet	911 Carrera 4S Cabriolet	911 Targa 4	911 Targa 4S	911 Turbo	911 Turbo S	911 Turbo Cabriolet	911 Turbo S Cabriolet	911 GT3 RS 4.0	I no.	Page
• PCM package painted <sup>1)</sup>	o	o	o	o	o	o	o	o	o	o	o	o	o	o	o	o	o	CUF	24, 34
• Gear lever/selecter trim painted <sup>1)</sup>	o	o	o	o	o	o	o	o	o	o	o	o	o	o	o	o	o	XDJ	24, 44
• Rear centre console painted <sup>1)</sup>	o	o	o	o	o	o	o	o	o	o	o	o	o	o	o	o	o	XME	24
• Rear centre console painted in different exterior colour	o	o	o	o	o	o	o	o	o	o	o	o	o	o	o	o	o	CME	–
• B-pillar seat belt outlet trim painted <sup>1)</sup>	o	o	o	o	o	o	o	o	o	o	o	o	o	o	o	o	o	XDR	25
• Sports seat backrests painted <sup>2)</sup>	o	o	o	o	o	o	o	o	o	o	o	o	o	o	o	o	o	XSA	36
• Sports bucket seat belt passages painted <sup>1)</sup>	o	o	o	o	o	o	o	o	o	o	o	o	o	o	o	o	o	CMT	36

– not available o I number/extra-cost option • standard equipment W no-cost option  
More detailed information on individual equipment and equipment packages can be found in the current vehicle price list.

## Interior.

Option	911 Carrera	911 Carrera S	911 Carrera GTS	911 Carrera 4	911 Carrera 4S	911 Carrera Cabriolet	911 Carrera S Cabriolet	911 Carrera GTS Cabriolet	911 Carrera 4 Cabriolet	911 Carrera 4S Cabriolet	911 Targa 4	911 Targa 4S	911 Turbo	911 Turbo S	911 Turbo Cabriolet	911 Turbo S Cabriolet	911 GT3 RS 4.0	I no.	Page	
• Seat belts in																				
• Silver Grey	o	o	o	o	o	o	o	o	o	o	o	o	o	o	o	o	o	o	XSH	–
• Sand Beige	o	o	o	o	o	o	o	o	o	o	o	o	o	o	o	o	o	o	XST	–
• Guards Red	o	o	o	o	o	o	o	o	o	o	o	o	o	o	o	o	o	o	XSX	–
• Speed Yellow	o	o	o	o	o	o	o	o	o	o	o	o	o	o	o	o	o	o	XSY	46
• Full-colour Porsche logo on wind deflector	–	–	–	–	–	o	o	o	o	o	–	–	–	–	o	o	–	o	CUL	37
• Rear footwell lighting	o	o	o	o	o	o	o	o	o	o	o	o	o	o	o	o	o	o	CEE	37
• Door storage compartment lighting	o	o	o	o	o	o	o	o	o	o	o	o	o	o	o	o	o	o	CEF	–

<sup>1)</sup> Paint in exterior colour. This option is also available in black paint, independent of the exterior colour (different order number). Please refer to the current price list for your specific vehicle for details and part numbers.

<sup>2)</sup> Paint in exterior colour.



Extended trim package in leather, PCM package in leather



Instrument cluster surround in leather



Windscreen defroster panel and defroster vents in leather

### Interior: leather<sup>1)</sup>

Option	911 Carrera	911 Carrera S	911 Carrera GTS	911 Carrera 4	911 Carrera 4S	911 Carrera Cabriolet	911 Carrera S Cabriolet	911 Carrera GTS Cabriolet	911 Carrera 4 Cabriolet	911 Carrera 4S Cabriolet	911 Targa 4	911 Targa 4S	911 Turbo	911 Turbo S	911 Turbo Cabriolet	911 Turbo S Cabriolet	911 GT3 RS 4.0	I no.	Page	
• Extended trim package in leather	o	o	o	o	o	o	o	o	o	o	o	o	o	o	o	o	o	o	EAF	18, 38
• Extended trim package door trims in leather	o	o	o	o	o	o	o	o	o	o	o	o	o	o	o	o	o	o	XTV	15
• Door release levers in leather	o	o	o	o	o	o	o	o	o	o	o	o	o	o	o	o	o	o	CYM	27
• Loudspeaker finishers on doors and at rear in leather	o	o	o	o	o	o	o	o	o	o	o	o	o	o	o	o	o	o	XVT	15, 18, 36
• Instrument cluster surround in leather	o	o	o	o	o	o	o	o	o	o	o	o	o	o	o	o	o	o	XNG	39

– not available o I number/extra-cost option • standard equipment W no-cost option  
More detailed information on individual equipment and equipment packages can be found in the current vehicle price list.

### Interior: leather<sup>1)</sup>

Option	911 Carrera	911 Carrera S	911 Carrera GTS	911 Carrera 4	911 Carrera 4S	911 Carrera Cabriolet	911 Carrera S Cabriolet	911 Carrera GTS Cabriolet	911 Carrera 4 Cabriolet	911 Carrera 4S Cabriolet	911 Targa 4	911 Targa 4S	911 Turbo	911 Turbo S	911 Turbo Cabriolet	911 Turbo S Cabriolet	911 GT3 RS 4.0	I no.	Page	
• Steering wheel rim with contrasting decorative stitching	o	o	o	o	o	o	o	o	o	o	o	o	o	o	o	o	o	o	CLU	27
• Steering column casing in leather	o	o	o	o	o	o	o	o	o	o	o	o	o	o	o	o	o	o	XNS	12, 24
• Windscreen defroster panel in leather	o	o	o	o	o	o	o	o	o	o	o	o	o	o	o	o	o	o	XV1	39
• Windscreen defroster vents in leather	o	o	o	o	o	o	o	o	o	o	o	o	o	o	o	o	o	o	CNB	39
• PCM package in leather	o	o	o	o	o	o	o	o	o	o	o	o	o	o	o	o	o	o	CUR	10, 38

<sup>1)</sup> Leather trim in interior colour unless otherwise specified at time of ordering.  
For information on leather trim in a contrasting interior colour, please contact your Porsche Centre.





Interior light surround, rear-view mirror and roof lining in leather, sun visors in two tone leather



Interior package (A-pillar) in leather



Interior package (B-pillar) in leather



Interior package (C-pillar) in leather

### Interior: leather<sup>1)</sup>.

Option	911 Carrera	911 Carrera S	911 Carrera GTS	911 Carrera 4	911 Carrera 4S	911 Carrera Cabriolet	911 Carrera S Cabriolet	911 Carrera GTS Cabriolet	911 Carrera 4 Cabriolet	911 Carrera 4S Cabriolet	911 Targa 4	911 Targa 4S	911 Turbo	911 Turbo S	911 Turbo Cabriolet	911 Turbo S Cabriolet	911 GT3 RS 4.0	I no.	Page
• Interior package (A-pillar) in leather	○	○	○	○	○	○	○	○	○	○	○	○	○	○	○	○	○	EAK	40
• Interior package (B-pillar) in leather	○	○	○	○	○	○	○	○	○	○	○	○	○	○	○	○	○	DAB	41
• Interior package (C-pillar) in leather	○	○	○	○	○	○	○	○	○	○	○	○	○	○	○	○	○	DAC	41
• Roof lining in leather	○	○	○	○	○	○	○	○	○	○	○	○	○	○	○	○	○	XMA	12, 40
• Sun visors in leather	○	○	○	○	○	○	○	○	○	○	○	○	○	○	○	○	○	XMP	–
• Sun visors in leather, two-tone	○	○	○	○	○	○	○	○	○	○	○	○	○	○	○	○	○	CVV	12, 40

– not available ○ I number/extra-cost option ● standard equipment W no-cost option  
More detailed information on individual equipment and equipment packages can be found in the current vehicle price list.

### Interior: leather<sup>1)</sup>.

Option	911 Carrera	911 Carrera S	911 Carrera GTS	911 Carrera 4	911 Carrera 4S	911 Carrera Cabriolet	911 Carrera S Cabriolet	911 Carrera GTS Cabriolet	911 Carrera 4 Cabriolet	911 Carrera 4S Cabriolet	911 Targa 4	911 Targa 4S	911 Turbo	911 Turbo S	911 Turbo Cabriolet	911 Turbo S Cabriolet	911 GT3 RS 4.0	I no.	Page
• Interior light surround in leather	○	○	○	○	○	○	○	○	○	○	○	○	○	○	○	○	○	XZD	12, 40
• Rear-view mirror in leather	○	○	○	○	○	○	○	○	○	○	○	○	○	○	○	○	○	XVW	12, 40
• Dashboard trim strip in leather	○	○	○	○	○	○	○	○	○	○	○	○	○	○	○	○	○	XVP	12
• Gear lever trim in leather	○	○	○	○	○	○	○	○	○	○	○	○	○	○	○	○	○	XDZ	48
• PDK gear selector gate surround in leather	○	○	○	○	○	○	○	○	○	○	○	○	○	○	○	○	○	XWU	24, 42
• Gear lever/selector trim in leather	○	○	○	○	○	○	○	○	○	○	○	○	○	○	○	○	○	CYP	27

<sup>1)</sup> Leather trim in interior colour unless otherwise specified at time of ordering.  
For information on leather trim in a contrasting interior colour, please contact your Porsche Centre.



PDK gear selector gate surround in leather



Storage compartment lid with Porsche Crest



Sports seat backrests in leather, clothes hooks on seat backrests in leather



Personalised floor mats with leather surround

## Interior: leather<sup>1)</sup>

Option	911 Carrera	911 Carrera S	911 Carrera GTS	911 Carrera 4	911 Carrera 4S	911 Carrera Cabriolet	911 Carrera S Cabriolet	911 Carrera GTS Cabriolet	911 Carrera 4 Cabriolet	911 Carrera 4S Cabriolet	911 Targa 4	911 Targa 4S	911 Turbo	911 Turbo S	911 Turbo Cabriolet	911 Turbo S Cabriolet	911 GT3 RS 4.0	I no.	Page	
• Rear centre console in leather	o	o	o	o	o	o	o	o	o	o	o	o	o	o	o	o	o	o	XMZ	12, 18
• Storage compartment lid with Porsche Crest	o	o	o	o	o	o	o	o	o	o	o	o	o	o	o	o	o	o	XPT	42
• Storage compartment lid with logo	o	o	o	o	o	o	o	o	o	o	o	o	o	o	o	o	o	o	XUV	Title
• Sports seat backrests in leather	o	o	o	o	o	o	o	o	o	o	o	o	o	o	o	o	o	o	XSB	43
• Clothes hooks on seat backrests in leather	o	o	o	o	o	o	o	o	o	o	o	o	o	o	o	o	o	o	XVY	43
• Porsche Crest embossed on headrests	o	o	o	o	o	o	o	o	o	o	o	o	o	o	o	o	o	o	XSC	-
• Seat belt buckles in leather	o	o	o	o	o	o	o	o	o	o	o	o	o	o	o	o	o	o	CDT	12, 24
• B-pillar seat belt outlet trim in leather	o	o	o	o	o	o	o	o	o	o	o	o	o	o	o	o	o	o	XDU	-

- not available o I number/extra-cost option • standard equipment W no-cost option  
More detailed information on individual equipment and equipment packages can be found in the current vehicle price list.

## Interior: leather<sup>1)</sup>

Option	911 Carrera	911 Carrera S	911 Carrera GTS	911 Carrera 4	911 Carrera 4S	911 Carrera Cabriolet	911 Carrera S Cabriolet	911 Carrera GTS Cabriolet	911 Carrera 4 Cabriolet	911 Carrera 4S Cabriolet	911 Targa 4	911 Targa 4S	911 Turbo	911 Turbo S	911 Turbo Cabriolet	911 Turbo S Cabriolet	911 GT3 RS 4.0	I no.	Page	
• Rear seat backrest lever in leather	o	o	o	o	o	o	o	o	o	o	o	o	o	o	o	o	o	o	XUX	41
• Luggage stop on rear seat backrest in leather	o	o	o	o	o	o	o	o	o	o	o	o	o	o	o	o	o	o	CVD	-
• BOSE® Subwoofer outputs in leather	o	o	o	o	o	o	o	o	o	o	o	o	o	o	o	o	o	o	CVZ	-
• Fuse box cover in leather	o	o	o	o	o	o	o	o	o	o	o	o	o	o	o	o	o	o	CUJ	-
• Inner door sill guards in leather	o	o	o	o	o	o	o	o	o	o	o	o	o	o	o	o	o	o	XTG	21
• Floor mats with leather surround	o	o	o	o	o	o	o	o	o	o	o	o	o	o	o	o	o	o	CJX	-
• Personalised floor mats with leather surround	o	o	o	o	o	o	o	o	o	o	o	o	o	o	o	o	o	o	CFX	43
• Key pouch in leather	o	o	o	o	o	o	o	o	o	o	o	o	o	o	o	o	o	o	CPU	-

<sup>1)</sup> Leather trim in interior colour unless otherwise specified at time of ordering.  
For information on leather trim in a contrasting interior colour, please contact your Porsche Centre.





Interior in Alcantara, air vent slats painted, instrument dials in Guards Red, Sport Chrono stopwatch dial in Guards Red, gear lever/selector trim painted



Storage compartment lid in Alcantara with Porsche logo



B-pillar seat belt outlet trim in macassar wood

### Interior: Alcantara.

Option	911 Carrera	911 Carrera S	911 Carrera GTS	911 Carrera 4	911 Carrera 4S	911 Carrera Cabriolet	911 Carrera S Cabriolet	911 Carrera GTS Cabriolet	911 Carrera 4 Cabriolet	911 Carrera 4S Cabriolet	911 Targa 4	911 Targa 4S	911 Turbo	911 Turbo S	911 Turbo Cabriolet	911 Turbo S Cabriolet	911 GT3 RS 4.0	I no.	Page
• Steering wheel in Alcantara, padded	o	o	o	o	o	o	o	o	o	o	o	o	o	o	o	o	o	CLA	44
• Dashboard trim strip in Alcantara	o	o	o	o	o	o	o	o	o	o	o	o	o	o	o	o	o	CLE	44
• Gear and handbrake lever in Alcantara	o	o	-	o	o	o	-	o	o	o	o	o	o	-	o	o	-	DAT	44
• PDK gear selector and handbrake lever in Alcantara	o	o	-	o	o	o	-	o	o	o	o	o	o	o	o	o	-	DAP	-
• PDK gear selector in Alcantara	-	-	o	-	-	-	-	o	-	-	-	-	-	-	-	-	-	CLH	-
• Rear centre console in Alcantara	o	o	o	o	o	o	o	o	o	o	o	o	o	o	o	o	o	CLM	44
• Storage compartment lid in Alcantara with Porsche logo	o	o	o	o	o	o	o	o	o	o	o	o	o	o	o	o	o	XLG	44, 45
• Storage compartment lid in Alcantara with Porsche logo, red	-	-	-	-	-	-	-	-	-	-	-	-	-	-	-	-	-	CLW	-
• Sun visors in Alcantara	-	-	o	-	-	-	o	-	-	-	-	-	-	-	-	-	o	CYW	-

- not available o I number/extra-cost option • standard equipment W no-cost option  
More detailed information on individual equipment and equipment packages can be found in the current vehicle price list.

### Interior: macassar wood, carbon, Aluminium Look.

Option	911 Carrera	911 Carrera S	911 Carrera GTS	911 Carrera 4	911 Carrera 4S	911 Carrera Cabriolet	911 Carrera S Cabriolet	911 Carrera GTS Cabriolet	911 Carrera 4 Cabriolet	911 Carrera 4S Cabriolet	911 Targa 4	911 Targa 4S	911 Turbo	911 Turbo S	911 Turbo Cabriolet	911 Turbo S Cabriolet	911 GT3 RS 4.0	I no.	Page
• Extended trim package <sup>1)</sup>	o	o	o <sup>2)</sup>	o	o	o	o	o <sup>2)</sup>	o	o	o	o	o	o	o	o	o	-	46
• Rear centre console <sup>1)</sup>	o	o	o <sup>2)</sup>	o	o	o	o	o <sup>2)</sup>	o	o	o	o	o	o	o	o	o	o <sup>2)</sup>	46
• B-pillar seat belt outlet trim <sup>1)</sup>	o	o	o <sup>2)</sup>	o	o	o	o	o <sup>2)</sup>	o	o	o	o	o	o	o	o	o	o <sup>2)</sup>	-
• Extended trim package in carbon	-	-	-	-	-	-	-	-	-	-	-	-	-	-	-	-	-	EZD	-

<sup>1)</sup> This option is available in dark macassar wood (satin-matt), carbon and Aluminium Look. Please refer to the current price list for your specific vehicle for details and part numbers.

<sup>2)</sup> This option is available in carbon only.



Interior: macassar wood



Interior: carbon



Interior: Aluminium Look



Multifunction steering wheel in Aluminium Look, PCM package in Aluminium Look

**Interior: stainless steel, aluminium, Aluminium Look.**

**Option**

- Instrument cluster surround in Aluminium Look
- Multifunction steering wheel in Aluminium Look
- Air vent slats in Aluminium Look
- Dashboard trim strip in Aluminium Look
- PCM package in Aluminium Look
- Sports bucket seat belt passages in Aluminium Look

	911 Carrera	911 Carrera S	911 Carrera GTS	911 Carrera 4	911 Carrera 4S	911 Carrera Cabriolet	911 Carrera S Cabriolet	911 Carrera GTS Cabriolet	911 Carrera 4 Cabriolet	911 Carrera 4S Cabriolet	911 Targa 4	911 Targa 4S	911 Turbo	911 Turbo S	911 Turbo Cabriolet	911 Turbo S Cabriolet	911 GT3 RS 4.0	I no.	Page	
• Instrument cluster surround in Aluminium Look	○	○	○	○	○	○	○	○	○	○	○	○	○	○	○	○	○	-	XCL	-
• Multifunction steering wheel in Aluminium Look	○	○	○	○	○	○	○	○	○	○	○	○	○	○	○	○	○	-	XPU	23, 47
• Air vent slats in Aluminium Look	○	○	○	○	○	○	○	○	○	○	○	○	○	○	○	○	○	-	CDA	27
• Dashboard trim strip in Aluminium Look	○	●	●	●	●	●	●	●	●	●	●	●	●	●	●	●	●	-	CDE	46
• PCM package in Aluminium Look	○	○	○	○	○	○	○	○	○	○	○	○	○	○	○	○	○	-	CCP	23, 47
• Sports bucket seat belt passages in Aluminium Look	○	○	○	○	○	○	○	○	○	○	○	○	○	○	○	○	○	-	CMS	-

- not available ○ I number/extra-cost option ● standard equipment W no-cost option  
 More detailed information on individual equipment and equipment packages can be found in the current vehicle price list.





Gear lever trim in leather, gear and handbrake levers in aluminium I



PDK gear selector and handbrake lever in aluminium

### Interior: stainless steel, aluminium, Aluminium Look.

Option	911 Carrera	911 Carrera S	911 Carrera GTS	911 Carrera 4	911 Carrera 4S	911 Carrera Cabriolet	911 Carrera S Cabriolet	911 Carrera GTS Cabriolet	911 Carrera 4 Cabriolet	911 Carrera 4S Cabriolet	911 Targa 4	911 Targa 4S	911 Turbo	911 Turbo S	911 Turbo Cabriolet	911 Turbo S Cabriolet	911 GT3 RS 4.0	I no.	Page
• Gear and handbrake levers in aluminium I	○	○	○	○	○	○	○	○	○	○	○	○	○	○	○	○	○	ECA	48
• Gear and handbrake lever trim package I	○	○	○	○	○	○	○	○	○	○	○	○	○	○	○	○	○	DAX	–
• Gear and handbrake levers in aluminium II	○	○	○	○	○	○	○	○	○	○	○	○	○	○	○	○	○	ECC	–
• Gear and handbrake lever trim package II	○	○	○	○	○	○	○	○	○	○	○	○	○	○	○	○	○	DAW	–
• PDK gear selector and handbrake lever in aluminium	○	○	○	○	○	○	○	○	○	○	○	○	○	○	○	○	○	ECB	18, 23, 49
• PDK gear selector and handbrake lever personalisation package	○	○	○	○	○	○	○	○	○	○	○	○	○	○	○	○	○	DAZ	12, 27

### Interior: stainless steel, aluminium, Aluminium Look.

Option	911 Carrera	911 Carrera S	911 Carrera GTS	911 Carrera 4	911 Carrera 4S	911 Carrera Cabriolet	911 Carrera S Cabriolet	911 Carrera GTS Cabriolet	911 Carrera 4 Cabriolet	911 Carrera 4S Cabriolet	911 Targa 4	911 Targa 4S	911 Turbo	911 Turbo S	911 Turbo Cabriolet	911 Turbo S Cabriolet	911 GT3 RS 4.0	I no.	Page
• Handbrake lever in aluminium II	○	○	○	○	○	○	○	○	○	○	○	○	○	○	○	○	○	XFP	24
• Handbrake lever in aluminium II with decorative stitching in contrasting colour	○	○	○	○	○	○	○	○	○	○	○	○	○	○	○	○	○	CFP	–
• PDK gear selector gate surround in Aluminium Look	○	○	○	○	○	○	○	○	○	○	○	○	○	○	○	○	○	XWR	–
• Gear lever/selector trim in Aluminium Look	○	●	●	●	●	●	●	●	●	●	○	○	○	○	○	○	○	CDF	46
• Sports-style footrest	○	○	○	○	○	○	○	○	○	○	○	○	○	○	○	○	○	XXZ	–

– not available ○ I number/extra-cost option ● standard equipment W no-cost option  
 More detailed information on individual equipment and equipment packages can be found in the current vehicle price list.



Personalised door sill guards in stainless steel with '911 turbo' logo in Meteor Grey Metallic



Door sill guards in carbon



Door sill guards in carbon, illuminated



Door sill guards in stainless steel



Personalised door sill guards in stainless steel, illuminated

## Door sill guards.

Option	911 Carrera	911 Carrera S	911 Carrera GTS	911 Carrera 4	911 Carrera 4S	911 Carrera Cabriolet	911 Carrera S Cabriolet	911 Carrera GTS Cabriolet	911 Carrera 4 Cabriolet	911 Carrera 4S Cabriolet	911 Targa 4	911 Targa 4S	911 Turbo	911 Turbo S	911 Turbo Cabriolet	911 Turbo S Cabriolet	911 GT3 RS 4.0	I no.	Page		
• Door sill guards in carbon	○	○	○	○	○	○	○	○	○	○	○	○	○	○	○	○	○	●	X69	51	
• Door sill guards in carbon, illuminated	○	○	○	○	○	○	○	○	○	○	○	○	○	○	○	○	○	○	-	XXD	51
• Personalised door sill guards in carbon, illuminated	○	○	○	○	○	○	○	○	○	○	○	○	○	○	○	○	○	○	○	CXE	-
• Door sill guards in stainless steel	○	○	●	○	○	○	○	○	○	○	○	○	○	○	○	○	○	○	-	X70	51
• Door sill guards in stainless steel, illuminated	○	○	○	○	○	○	○	○	○	○	○	○	○	○	○	○	○	○	-	XXB	-
• Personalised door sill guards in stainless steel	○	○	○	○	○	○	○	○	○	○	○	○	○	○	○	○	○	○	-	CUA	50
• Personalised door sill guards in stainless steel, illuminated	○	○	○	○	○	○	○	○	○	○	○	○	○	○	○	○	○	○	-	CXC	21, 51

- not available ○ I number/extra-cost option ● standard equipment W no-cost option  
 More detailed information on individual equipment and equipment packages can be found in the current vehicle price list.





## Exclusive expertise

### When was the last time your dream became reality?

A philosophy of thinking laterally and pursuing different routes is undoubtedly what has led Porsche in a very special direction: an exclusive one. Towards small-scale production and special editions which commenced at the beginning of the 1980s with the 935 Street and which continue to this day. At the heart of it all is the Porsche 'personalisation programme' which has been known since 1986 as Porsche Exclusive.

The 25th anniversary of Porsche Exclusive sees us continuing that tradition of small-scale production with a vehicle which yet again shows you just what we're capable of. A vehicle that takes us back to where the dream began – to the first Porsche, in fact, the Porsche 356. Hence, the limited number of 356 and the name of the vehicle: the 911 Speedster.

The 911 Speedster may well be a limited edition, but your dreams know no limits. We do everything possible to fulfil your wishes. To make your Porsche even more exclusive and exactly how you imagined it to be. We're even happy to include extras featured on the 911 Speedster. So whether your preference is for a PDK gear selector/handbrake lever in aluminium, black painted mirror attachment point finishers and exterior mirror lower trims, or door sill guards with personalised logo, almost anything is possible.

This is how we continue to create unique vehicles. And make dreams come true. Perhaps even yours one day soon.





# Designing your Porsche

## **Porsche Exclusive – What else is exclusive to each and every car? Exclusive advice.**

Everything starts with the right advice. And the focus is on you and your exclusive wishes and requirements. We offer personal support and individual expert advice to each and every customer.

So, why wait? Make an appointment with your Porsche Centre to discuss your requirements.

Or contact the Porsche Exclusive Customer Centre in Zuffenhausen directly:  
tel.: +49 (0)711 911-25977 or e-mail:  
customercenter-exclusive@porsche.de.

You can see what we really mean by customisation at our Porsche Exclusive Customer Centres in Zuffenhausen and Leipzig.

Here, among other things, you can select the materials, exclusive woods, paint colours and leather of your choice and plan your own

Porsche using the Porsche Car Configurator. We want to show you what we can do. And you can also experience how we make customer requirements into reality, here, directly on site. Down to the finest detail. Just as you expect from Porsche Exclusive.

The Porsche new vehicle warranty applies for all Porsche Exclusive options and special designs. Please note that delivery times may be extended for certain Porsche Exclusive equipment.



## **Porsche Financial Services**

Our innovative suite of financial services is specially tailored to the needs of Porsche owners. Products range from attractive finance and leasing options to vehicle insurance and the Porsche Card.

## **Porsche Used Car Programme**

So that our vehicles remain reliable and retain their value, we guarantee that all our Porsche Approved cars meet the most stringent Porsche quality standards, anywhere in the world. Every car is backed by the Porsche Approved warranty.

## **Porsche Equipment**

Personalise your Porsche at any time after purchase with the Equipment range of approved accessories. Designed exclusively for your car, every product is fully guaranteed.

## Service



## **Porsche Online**

For all the latest news and information from Porsche, go to [www.porsche.com](http://www.porsche.com).



## **Porsche Design Driver's Selection**

With products ranging from fashion and accessories to tailored luggage, this unique collection combines quality and style with everyday practicality.



## **Porsche Clubs**

Since the first Porsche Club was founded in 1952, their number has grown to 620 with a total of 180,000 members worldwide. To find out more, call +49 (0)711 911-78307 or go to [www.porsche.com](http://www.porsche.com).



## **Porsche Driving Experience**

The Porsche Travel Club offers exclusive driving experiences worldwide: +49 (0)711 911-78155. Learn how to push your Porsche to the limit at the Porsche Sport Driving School: +49 (0)711 911-78683.









  
**25 years Porsche Exclusive**